

The Latest in LTSS



Interested Parties Group (IPAG) Update

The Interested Parties Advisory Group (IPAG), established under the Ensuring Access to Medicaid Services final rule ((FFS)42 CFR 447.203), will advise, consult, and offer feedback to the Department of Health Care Policy and Financing (HCPF) about provider rates for direct care workers in the areas of Personal Care, Home Health Aide, and Homemaker services. The IPAG will give direct care workers and people with lived experience a place to share their experiences and ideas about payment rates and direct compensation for workers.

Due to the current budget climate and recent [CMS guidance](#), HCPF has decided to pause on moving forward with interviews and assembly of the IPAG at this time. The CMS direction and guidance is ever-evolving, so HCPF will notify the community when there is a clearer timeline for this group via this newsletter and other Office of Community Living communications.

In the meantime, please engage in the following opportunities to hear updates and participate in the direct care workforce improvements in Colorado:

- [Direct Care Workforce Stabilization Board](#)
- [Direct Care Workforce Collaborative](#)

Proposed County Changes to Benefit Service Delivery

Colorado's Department of Health Care Policy & Financing (HCPF) and Department of Human Services (CDHS) have introduced a joint proposal to modernize how public benefits are administered across the state. The goal: improve efficiency, meet new federal requirements, and strengthen access to essential benefits for millions of Coloradans.

The proposals have two parts that work together 1) shared services, which remove some administrative non eligibility duties from individual counties into a single "shared service" with one county performing the work statewide - examples of this are a joint call center and document scanning functions and 2) formation of districts for eligibility functions. The [HCPF/DHS proposal](#) will evolve and the page will be updated to reflect changes.

Newsletter Highlights

IPAG Update (page 1)

County changes (page 1)

Advocacy opportunities (page 2)

Feedback for the newsletter (page 2)

PEAK Parent Center Summer Guide (page 3)



Advocacy Opportunities

Disability Rights Advocacy Day (DRAD) 2026

Join the Colorado Cross-Disability Coalition (CCDC) at the Colorado State Capitol for a day filled with empowerment, education, and advocacy for disability rights. This event is your chance to make your voice heard, connect with fellow advocates, and learn from engaging speakers. Together, we can work towards creating a more inclusive and accessible Colorado for all.

Note: registration is open, but capacity has been met for participants who will receive a provided lunch and be assigned to a Legislative Captain-led group for legislator meetings. Individuals registering at this time are welcome and encouraged to attend D-RAD but should expect a more self-directed experience. Day-of staff and volunteers will be available to provide guidance, answer questions, and help direct participants throughout the event.

More advocacy resources are available on their website: <https://ccdconline.org/get-assistance/individual-advocacy/>

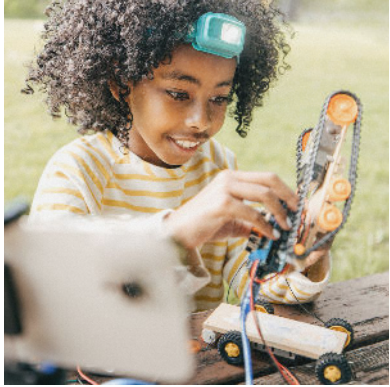
Track IDD Related Bill's Through Alliance's Bill Tracker

Feedback for the LTSS newsletter? Let us know through our form by clicking or scanning the QR code.



What the Acronyms Mean

- **ARG** = Arbor Review Group (3rd party disability application reviewer)
- **CFC** = Community First Choice
- **CDASS** = Consumer-Directed Attendant Support Services
- **CMA** = Case Management Agencies. Formerly CCBs and SEPs.
- **CMRD** = Case Management Redesign
- **CCM** = Care and Case Management system (statewide Member health record). This replaced the Benefits Utilization System (BUS)
- **DSA** = Direct Service Area. This is how CMRD designated CMAs. TRE works with both DSA 11 (El Paso, Park, and Teller Counties) and DSA 12 (Pueblo County).
- **HCPF** = Health Care Policy and Financing
- **HMA** = Health Maintenance Activities
- **ISLA** = Interim Supports Level Assessment
- **LTSS** = Long Term Services and Supports. Also known as HCBS (Home and Community Based Services) or LTC (Long Term Care).
- **Member** = person in services
- **NA** = Nurse Assessor
- **OCL** = Office of Community Living
- **PAR** = Prior Authorization Request
- **PETI** = Post Eligibility Treatment of Income
- **RAE** = Regional Accountable Entity
- **SIS** = Supports Intensity Scale



SUMMER CAMPS AND YEAR-ROUND RECREATION

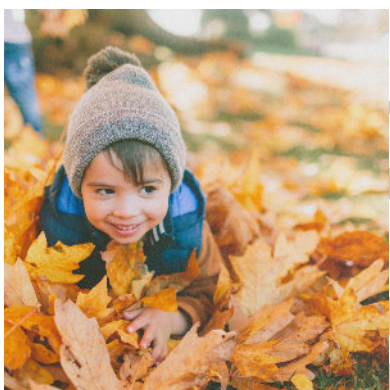
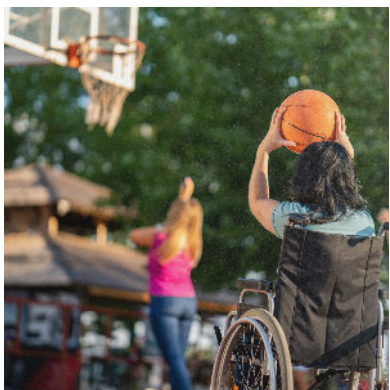
2025

A collaboration of



Helping Families Helping Children

Show+Tell





SUMMER CAMPS AND YEAR-ROUND RECREATION 2025

A collaboration of



Show+Tell

PEAK Parent Center in Collaboration with Show and Tell have gathered a collection of summer camps, winter activities, and year-round classes for kids and teens with disabilities. Each program is a little different—some are day programs, some are overnight, and the costs, ages, and types of activities can vary. Take some time to explore and see what feels like a good fit for your child and family.

A Note About Funding...



Some camps also offer scholarships or fundraising options to help with costs. Check with your county's Case Management Agency (CMA) for Medicaid Waiver funding: (<https://hcpf.colorado.gov/case-management-agency-directory>). CMA's can sometimes provide funds through Family Support Services Program (FSSP): (<https://hcpf.colorado.gov/family-support-services-program-fssp>).

Adam's Camp - GRANBY, CO. Ph: 303-563-8290

Each week-long therapy camp will provide intensive, multi-disciplinary therapies that will help your child work towards all of their therapy goals (speech, physical, occupational, music, art, and behavior). Adam's Camp also offers a Sibling Camp for typically developing siblings of campers to meet and interact with other children with families like their own.

<https://adamscamp.org/>

Adaptive and Inclusive Recreation (AIR) - THORNTON, CO.

We offer a variety of AIR programs year-round. We welcome people of all abilities and are designed to meet the needs of individuals with disabilities to participate in Special Olympics sports, archery, pickleball, social dances, cooking, art, adaptive climbing and more!

<https://www.thorntonco.gov/parks-recreation/recreation-programs/adaptive-inclusive>

Adaptive Sports Association - DURANGO, CO.

The Adaptive Sports Association (ASA) is a non-profit organization located at the foot of the beautiful San Juan Mountains in historic Durango, Colorado. Our mission is to provide outdoor, sport and recreational experiences for people with disabilities.

<https://asadurango.com/>

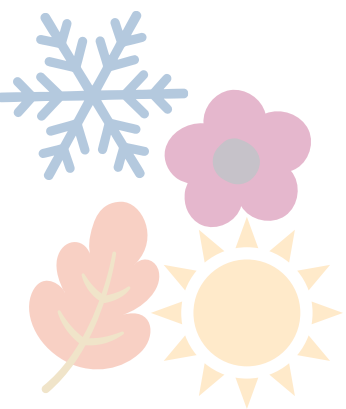
Adaptive Sports Center - CRESTED BUTTE, CO. Our outstanding community facilitates access to the incredible mountains, beautiful rivers, and lakes of Gunnison County, Colorado. Participants have access to state-of-the-art equipment such as sit-skis and hand cycles for those with spinal cord injuries, cerebral palsy, and other disabilities.

<https://www.adaptivesports.org/>

Affinity Ranch - PARKER, CO.

Therapy is provided by licensed/certified medical provider working within their scope of practice in occupational therapy, physical therapy, recreational therapy and speech-language pathology. Also equine assisted mental health, pre-vocational training, job coaching, and inclusive recreational activities.

<https://www.affinityranch.org/>



A.R.I.S.E - AURORA, CO. Ph: 303.326.8410

Day camps are held Monday through Thursday, for age 13 and up. Camp experiences include cooking classes, swimming, museum visits, behind-the-scenes tours, and attending plays, water parks, and farms. There are two overnight weekend camps for age 18 and up.

https://www.auroragov.org/things_to_do/recreation___sports_programs/adaptive_recreation___inclusion_services

Ascendigo - GLENWOOD SPRINGS, CO.

Ascendigo welcomes people ages 7 and up with an autism spectrum disorder, including classic autism, PDD-NOS, Asperger's and related diagnoses. Participants of any athletic ability can succeed. We pride ourselves in ensuring progress in our sports while having lots of fun!

<https://www.ascendigo.org/programs-services/adventures-camps/>

Aspen Camp - SNOWMASS, CO. Ph: 970-315-0513

Aspen Camp has served thousands of deaf and hard of hearing children and youth across the country at its modest camp 17-acre riparian environment nestled along the Snowmass Creek near Aspen, Colorado.

<https://aspencamp.org/programs/>

Boulder Mountain Parks and Open Space - BOULDER, CO.

Free accessible trails guide, Roll-and-Stroll Monthly hikes, adaptive bike rides, or request a program!

<https://bouldercolorado.gov/services/visitors-experiencing-disabilities>

Breckenridge Outdoor Recreation Center - BRECKENRIDGE, CO.

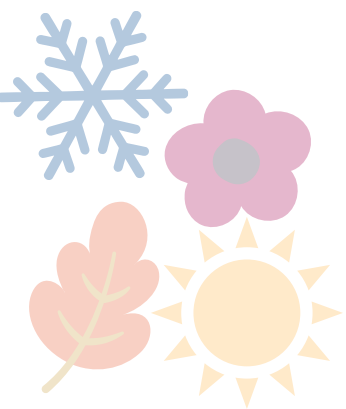
People from all over the U.S. and internationally come to participate in BOEC's Adaptive Ski and Snowboard Program, Wilderness Program, and Internship Program. We serve over 2,500 participants each year of all ability levels including adults and children with physical and cognitive disabilities, sensory differences, veterans and their families, and other historically disadvantaged populations.

<https://boec.org/>

Camp Amico - BOULDER, CO.

Camp Amico is for youth and teens ages 10 to 17 with developmental disabilities. Amico runs for seven weeks each summer providing a therapeutic summer camp experience to help our campers work on social skills, be active, and have fun! This popular program includes peer mentors (teens without disabilities) to make this program an inclusive experience and to help our teens build connections to other youth within their schools and the community.

<https://bouldercolorado.gov/camp-amico>



Camp Paha - LAKEWOOD, CO.

Camp Paha is a unique summer day camp for children and young adults with intellectual disabilities living in Lakewood and surrounding communities. Enjoy swimming, sports, games, nature, music, sensory, arts, crafts, and field trips in a safe, challenging, and fun environment. Camp Paha is a licensed Colorado Child Care program for campers ages 6-17. Paha Adults in Transition (PAT) is for adults ages 18-25.

<https://www.lakewood.org/Government/Departments/Community-Resources/Programs-and-Activities/Therapeutic-Recreation/Camp-Paha>

Challenge Aspen - ASPEN, CO.

Challenge Aspen is dedicated to improving lives by presenting meaningful recreational, educational and cultural experiences to individuals facing cognitive or physical challenges.

<https://challengeaspen.org/rec/>

Challenger Baseball Little League - VARIOUS.

Any individual with a physical or intellectual challenge may participate. The Little League Challenger Division accommodates players ages 4 to 18; or up to age 22 if still enrolled in school. The Senior League Challenger Division accommodates players ages 15 and above (no maximum age).

<https://www.littleleague.org/play-little-league/challenger/about-challenger/>

Cheyenne Mountain Zoo Camp - COLORADO SPRINGS, CO.

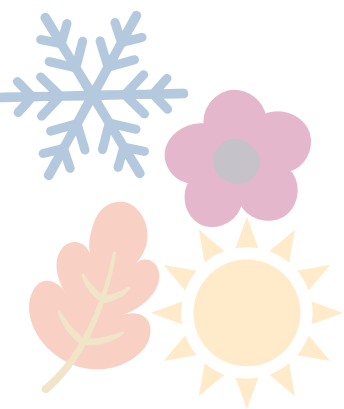
These day camp opportunities are specially designed for campers ages 7 -11 with autism spectrum disorders, sensory processing disorders, developmental disabilities/delays or medical fragility.

<https://www.cmzoo.org/events-programs/camps-classes/summer-camps/unique-differing-needs-camp-ages-7-11-movin-groovin/>

Club Spark - LAKEWOOD, CO. Ph: (888) 300-3081

Club Spark extended group sessions are community-based day programs that build social skills, community safety skills, and supports academic goals during school spring, summer, and winter breaks. Each child works with an ABA trained technician and is working on social and life skill goals from a current treatment plan created for your child based on your goals. *call for summer programs*

<https://www.cfcico.com/what-we-do>





Colorado Discover Ability - GRAND JUNCTION, CO.

Colorado Discover Ability (CDA) was founded in 1980 as the Powderhorn Handicapped Ski Program to provide adaptive alpine skiing for disabled individuals in western Colorado. In 1987, CDA expanded its mission to include year-round recreational opportunities, such as water-based activities and adaptive cycling. Today, CDA continues to offer inclusive outdoor programs, including adaptive ski and snowboard instruction at Powderhorn, summer day camps, and multi-day camps in collaboration with local therapy staff.

<https://cdagj.org/programs/>

Colorado Foundation for Conductive Education - LOVELAND and ARVADA, CO.

Our camps are 2-6 week intensive programs that teach participants problem solving skills, ADL activities, and independence in their daily lives. Addressing areas typically learned in OT, PT, and SLT in a fun, group environment with 1:2 staffing. We also offer year-round classes.

<https://www.conductiveed.com/summer-camp>

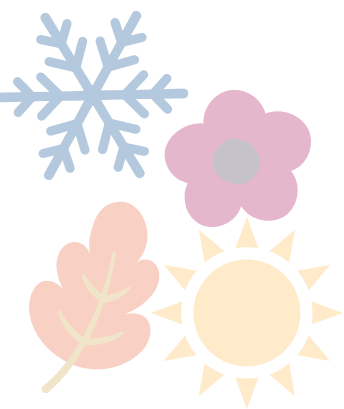
Colorado Lions Camp - WOODLAND PARK, CO. Ph: (719) 687-2087

mostly serves adults but offers one week of a kids camp ages 8-17. Call with questions:

<https://www.coloradolionscamp.org/>

Colorado Miss Amazing - STATEWIDE We draw inspiration from pageantry to teach vital self-advocacy skills, spark connections, and open up pathways to leadership. When girls with disabilities are encouraged to have pride in their identities and strengths, they gain the mindset necessary for pursuing the greatest versions of themselves.

<https://missamazing.org/chapters/CO>



Community Aquatics and Occupational Engagement (CANOE) - SW DENVER, CO.

CANOE® offers aquatic therapy & learn to swim classes under outpatient therapy services to people ages 2 months to adult.

<https://www.canoecommunity.org/>

Community Sailing of Colorado - CHERRY CREEK and BOULDER, CO.

We're always seeking new community groups to partner with through our Adaptive Sailing Program, which is specifically designed to serve individuals in our community with diverse cognitive, developmental, or physical abilities. Events typically range from 3 to 5 hours, depending on the group's preferences, and our mission is to share the joy of sailing while ensuring it's accessible to everyone.

<https://www.communitysailing.org/sailing-programs/adaptive-sailing/>

Denver Adaptive Recreation Program - DENVER, CO.

Denver Parks & Recreation (DPR) offers therapeutic programs for people with disabilities at any age. Through numerous leisure activities, Certified Therapeutic Recreation Specialists (CTRS) and other DPR team members create opportunities to improve quality of life, foster independence and boost self-esteem.

<https://www.denvergov.org/Government/Agencies-Departments-Offices/Agencies-Departments-Offices-Directories/Parks-Recreation/Activities-Programs/Adaptive-Recreation>

Easterseals Summer Camps at Rocky Mountain Village - EMPIRE, CO.

Various camps from ages 6 through adult, for those with physical and/or developmental disabilities, individuals on the autism spectrum, and/or those who use augmentative and alternative communication.

<https://www.easterseals.com/co/shared-components/spotlights/featured-resources/program-resources/rocky-mountain-village/summer-2025-1.html>

Easterseals Yay! Camp - HIGHLANDS RANCH, CO.

Open to children ages 7 to 18 living with any disability and any special health care need.

<https://www.easterseals.com/co/programs-and-services/play/yay-camp/>

EXPAND - BOULDER, CO.

The city of Boulder offers general day camps for youth 5 to 13 years old, where we can provide inclusion support for youth of all abilities. In addition, EXPAND runs Camp Amico (see above). These specialized camps are based out of Summit Middle School where we play games, socialize with peers, and go on fieldtrips to explore our community.

303-413-7256 <https://bouldercolorado.gov/services/expand>

Feel the Beat - LAKEWOOD, WESTMINSTER and COLORADO SPRINGS, CO.

Feel the Beat was founded in 2016 to ensure that those who are Deaf, Hard of Hearing, as well as those with or without disabilities can engage in music and dance education by providing an inclusive and adaptive curriculum that honors and uses their mode of communication. Weekly classes.

<https://www.feelthebeat.dance/>

Guided by Humanity - LAKEWOOD and ENGLEWOOD, CO.

All abilities yoga. Yoga increases ability to cope with illness, increased mental health balance, better ability to cope with stress, and increased feelings of wellbeing and overall health. Classes geared toward students experiencing neurodiversity, amputees, children 0 to 12 years of age and/or Developmental Age with Down Syndrome, Cerebral Palsy, Microcephaly, Autism, and other developmental disabilities, as well as for children diagnosed with Attention Deficit Disorder, ADHD, and Learning Disabilities.

<https://guidedbyhumanity.org/>

Harmony with Rez Dance - LOVELAND, CO.

A team made up of school-aged dancers of all abilities. We perform around our community with our outreach teams with the goal of letting God's light shine through our performances and spreading awareness of inclusion and unity. Oh, and we have lots of fun!

<https://www.harmonydanceteam.com/>

Hearts and Horses - LOVELAND, CO.

Adaptive therapeutic riding lessons. Therapeutic Riding is an equine-assisted activity designed for the purpose of contributing positively to the cognitive, physical, emotional and social well-being of people with disabilities.

<https://heartsandhorses.org/equine-assisted-services/>

Highlands Ranch Community Association - HIGHLANDS RANCH, CO.

A variety of programs are run by Therapeutic Recreation staff and assisted by volunteers. Camps include teaching balance and coordination; skills to play a variety of sports, emphasizing teamwork; a STEM challenge with engineering with Legos; and training for a kids triathlon in August. 303-471-7043

<https://hrcaonline.org/classes-camps-activities/therapeutic-recreation/classes-events>

iFLY Skydiving - LONE TREE and COLORADO SPRINGS, CO.

We're proud to empower people to soar beyond their own expectations. To make this possible for every single person, we invite people of All Abilities to indoor skydive.

<https://www.iflyworld.com/programs/all-abilities/>

Ignite Adaptive Sports - NEDERLAND, CO.

We invite outdoor enthusiasts of all ages and disabilities to join us at Eldora Mountain Resort. We offer experiences in downhill skiing, cross country skiing, snowboarding, snowshoeing, sit-skiing, and ski biking.

<https://igniteadaptivesports.org/>

INSPIRE Adventure Camp - EVERGREEN, CO.

Incorporates opportunities for Social, Physical and Inclusive Recreational Experiences for individuals with disabilities. INSPIRE believes that everyone, regardless of ability, deserves choices for health, leisure, recreation, education, advocacy, and wellness to enhance the quality of their lives. 720-880-1200 -

<https://www.evergreenrecreation.com/inspire-special-needs>

Jill Tullman & Associates - CENTENNIAL and COLORADO SPRINGS, CO.

Speech therapy and AAC therapy. We offer additional summer camps in addition to year-round classes.

<https://www.aac-therapy.com/>



Lockwood Foundation - VARIOUS.

The Lockwood Foundation is a 501(c)(3) community organization that creates opportunities for those with limited mobility to access to the trails and mountains in a way only community can. We currently use a combination of community and technology to create access to trails and adventures that are typically inaccessible or even considered impossible.

<https://www.thelockwoodfoundation.org/events>

Lone Tree Arts Center - LONE TREE, CO.

The Lone Tree Arts Center is a leader in sensory inclusive access. Sensory-inclusive (SI) performances are modified to create a welcoming and supportive environment for children and adults on the autism spectrum as well as individuals with other sensitivity issues or developmental disabilities.

<https://www.lonetreeartscenter.org/programs/sensory-inclusive>

Loveland Parks and Rec - LOVELAND, CO.

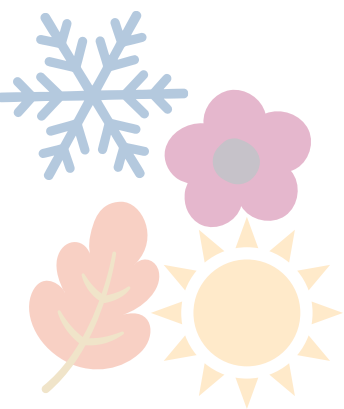
These programs are open to everyone but are designed to meet the unique needs of individuals with physical, intellectual, and/or emotional disabilities. Programs will be listed in the Adaptive Recreation section of the Activity Guide.

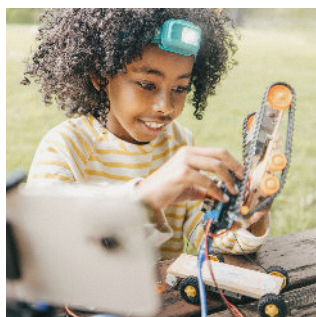
<https://www.lovgov.org/services/parks-recreation/chilson-recreation-center/adapted-recreation>

Megan's Place - WHEAT RIDGE, CO.

We provide respite care for children with physical and developmental disabilities ages 3-18. We offer care after school, evenings, and weekends. We provide summer programs with a variety of activities and field trips.

<https://megansplacellc.org/>





Miracle League Denver - DENVER, CO.

The Miracle League of Metro Denver (MLMD) offers an Adaptive Baseball League at Denver Parks & Recreation - Valverde Park. MLMD is a 501(c)3 nonprofit in metro Denver that provides children and adults, who are living with various mental and/or physical challenges, an opportunity to play baseball as a team member in an organized league.

<https://www.miracleleaguedenver.com/>

Muay Thai Beyond Limits - LAKEWOOD and DENVER, CO.

Martial Arts Accessible for People of All Abilities! We offer classes for children and adults, starting at age 2.5 through adult. Our program is inclusive (everyone is welcome!) and we focus on adapting our space and teaching style to make it accessible for children and adults with disabilities.

<https://www.muaythaibeyondlimits.com/>

Music Therapy Colorado - VARIOUS.

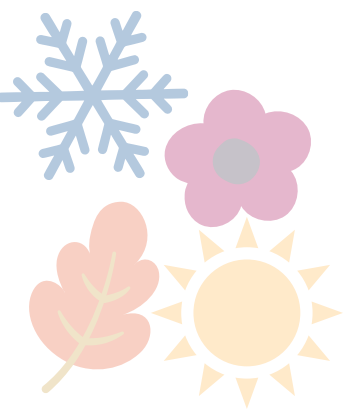
Music therapy is the clinical and evidence-based use of music to accomplish functional, non-musical goals within a therapeutic relationship by a Board Certified Music Therapist (MT-BC) who has completed a music therapy program approved by the American Music Therapy Association. It has been a formal profession since 1950. It is cost-effective and reimbursable.

<https://www.musictherapycolorado.org/find-a-music-therapist-map>

NAPA Center Denver - CENTENNIAL, CO. Ph: 720-791-2881

At the Neurological and Physical Abilitation (NAPA) Center, we embrace each child's differences and work with them to overcome their unique challenges. We do this by designing individualized intensive therapy programs with unique combinations of our wide range of speech, physical, occupational and other innovative therapies.

<https://napacenter.org/locations/napa-center-denver/>



National Sports Center for the Disabled - VARIOUS.

For more than 50 years, NCSD has led the way in redefining adaptive outdoor experiences. We've helped participants reignite a passion for playing and competing in the great outdoors. We've re-invented adaptive equipment, technology and coaching methods.

<https://nscd.org/program/day-camps/>

Phamaly Theater Company - DENVER, CO.

Dedicated to exclusively featuring actors with disabilities. At every performance, you will see actors with all nature of disabilities: physical, cognitive, intellectual, and emotional. Audition or come enjoy a show!

<https://phamaly.org/>

Real Life Colorado - LITTLETON, CO.

Summer camp for AAC Users ages 5-15.

<https://reallifecolorado.org/summer>

REVEL - VARIOUS

Our mission is to bridge the gap to adulthood for people with autism and IDD's to live meaningful, enriched lives. We host camps in summer and winter for people 14 and older who want to enjoy the fresh air while they learn fresh skills.

<https://revelinlife.org/programs/>

Rhythmic Roots Music Services - BOULDER to LITTLETON, CO.

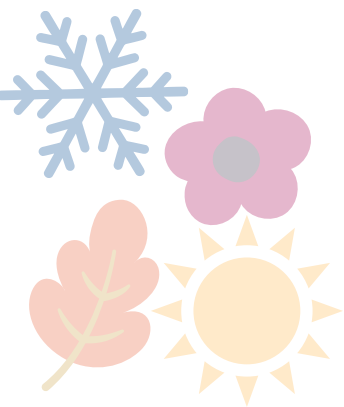
(I come to you!) Rhythmic Roots Music Services, LLC provides adapted lessons for individuals with all different levels of abilities, specializing in working with beginners and helping them achieve success at their level and pace.

<https://rhythmicrootsmusicservices.org/adapted-lessons>

Roundup River Ranch - GYPSUM, CO.

We make campers with serious illnesses feel like ordinary kids. Giggling, laughing, conspiring, arrow-shooting, horseback-riding, art-creating kids. We help campers and their families enjoy the gift of extraordinarily joyful moments, lasting friendships, newfound courage, and memories that remain long after the last s'more is devoured.

<https://roundupriverranch.org/>



Sēb's Recreation Center (SRC) - AURORA, CO.

Enjoy a walk-in massage, exercise in our fitness gym, and join us every Tuesday, Wednesday, and Thursday from 10am-2pm for our staff-guided activities! Each day will bring a new surprise, but you can expect a mix of exciting activities like crafts, Bingo, board games, karaoke, and more. Plus, enjoy daily access to foosball, arcade basketball, Nintendo Wii, arcade games, coloring, arts and crafts, and jigsaw puzzles. <https://sebsrec.org/>

Special Olympics - VARIOUS.

Sports bring people together. Special Olympics Unified Sports do that and much more. More than 1.2 million people worldwide take part in Unified Sports, breaking down stereotypes and changing perceptions. <https://specialolympicsco.org/getinvolved/becomeanathlete/>

STAR Institute - CENTENNIAL, CO.

Half-day camps for kids ages three to 17 with sensory processing challenges and other diagnosed disorders. Camps through STAR Institute include School Readiness Boot Camp, Superhero in Training Summer Camp, and Bike Camp. Social skills, language, and engagement are developed through games, sports, crafts, and cooking with guidance from occupational therapists trained to assist with sensory processing and integrated skills.

<https://sensoryhealth.org/>

T.A.C.T (Teaching the Autism Community Trades) Summer Camps - DENVER, CO.

Students with autism spectrum disorder are exposed to hands-on activities that are enjoyable but also lead to skilled trades. Camp classes are geared toward specific age groups and include guidance in hands-on activities such as learning how to make musical instruments, sewing, furniture-making, and an introduction into the trades that includes carpentry, electronics, fiber arts, and auto mechanics.

<https://www.buildwithtact.org/summer-camps>

Traveling Gnomes - VARIOUS from Denver

Traveling Gnomes are a group of nomadic spirits on a mission to deepen connections, celebrate differences, and explore the world around us. We plan and execute inclusive and accessible day trips and overnight trips alongside, and for, individuals with neurodiversities and disabilities. For teens and adults.

<https://www.thetravelinggnomes.org/>

We Rock the Spectrum - BROOMFIELD, CO.

Founded to provide a place for children of all ability levels to play and grow together. As the only kid's gym that offers an inclusive philosophy, we have found all children can benefit from our uniquely designed sensory equipment that is specifically designed to aid children with sensory processing disorders.

<https://werockthespectrumdenvernorthwest.com/open-play/>

Wild Child Parenting - LITTLETON, CO. Ph: 720-209-8797

Wild Child launched in 2020, focusing primarily on coaching and support for parents of autistic and neurodivergent children. Excited to announce an Inclusive Outdoor Summer Camp designed to foster self-advocacy, emotional regulation, and social confidence—all while immersed in nature. For ages 8-12.

[https://www.wildchildparenting.info/service-page/inclusive-outdoor-summer-camp?](https://www.wildchildparenting.info/service-page/inclusive-outdoor-summer-camp?fbclid=IwY2xjawJH3LpleHRuA2FibQIxMAABHdAS28F72FCrXDNvbQxIM3rZc1N_db2C_lj3irVdNnse8hB79g5q_XKpxg_aem_PM22yMNgMoH8bhnz-5pclA&referral=service_list_widget)

[fbclid=IwY2xjawJH3LpleHRuA2FibQIxMAABHdAS28F72FCrXDNvbQxIM3rZc1N_db2C_lj3irVdNnse8hB79g5q_XKpxg_aem_PM22yMNgMoH8bhnz-5pclA&referral=service_list_widget](https://www.wildchildparenting.info/service-page/inclusive-outdoor-summer-camp?fbclid=IwY2xjawJH3LpleHRuA2FibQIxMAABHdAS28F72FCrXDNvbQxIM3rZc1N_db2C_lj3irVdNnse8hB79g5q_XKpxg_aem_PM22yMNgMoH8bhnz-5pclA&referral=service_list_widget)

Wilderness Inclusion for Learning Development (WILD) - DENVER, CO.

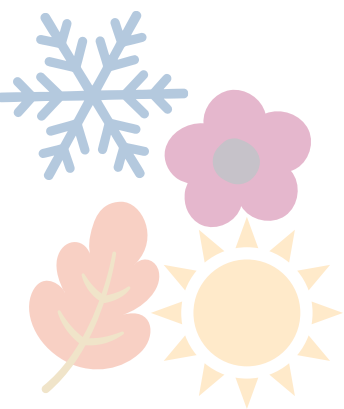
Wilderness Inclusion for Learning Development (WILD) is a brand new nonprofit organization based out of Littleton, Colorado. WILD is committed to increasing outdoor access and experiential education opportunities for individuals with cognitive and developmental disabilities.

<https://wildernessinclusion.org/>

Wilderness on Wheels - GRANT, CO.

Providing access to nature for people of all ages, abilities, their families, friends and caregivers for over 30 years. Our 1-mile boardwalk rises to over 9,000 ft in elevation and allows everyone - young and old, individuals and groups - to roll and stroll through the beautiful Colorado mountains. Spend a day hiking, fishing and grilling and then stay the night in a cabin or campsite.

<https://www.wildernessonwheels.org/>





917 E. Moreno Avenue # 140
Colorado Springs, CO 80903
719.531.9400
info@peakparent.org
peakparent.org

PEAK Parent Center empowers Colorado families of children with disabilities (birth–26) through training, information, and support. We work with parents, self-advocates, educators, and professionals to promote full inclusion in school, community, and employment—because every child deserves to thrive and belong.

Show+Tell

3131 S Vaughn Way #214
Aurora, CO 80014
303.632.6840
Info@WeShowAndTell.org
weshowandtell.org

Show & Tell exists to provide parents with information and training about disabilities; parent and children's rights under the IDEA (Individuals with Disabilities Education Act) and other relevant laws; and resources in the Denver Metro area.